



RAVEN MTi

User Guide



Studio One 5

RAVEN 3.9 for Windows

DISPLAY SETTINGS



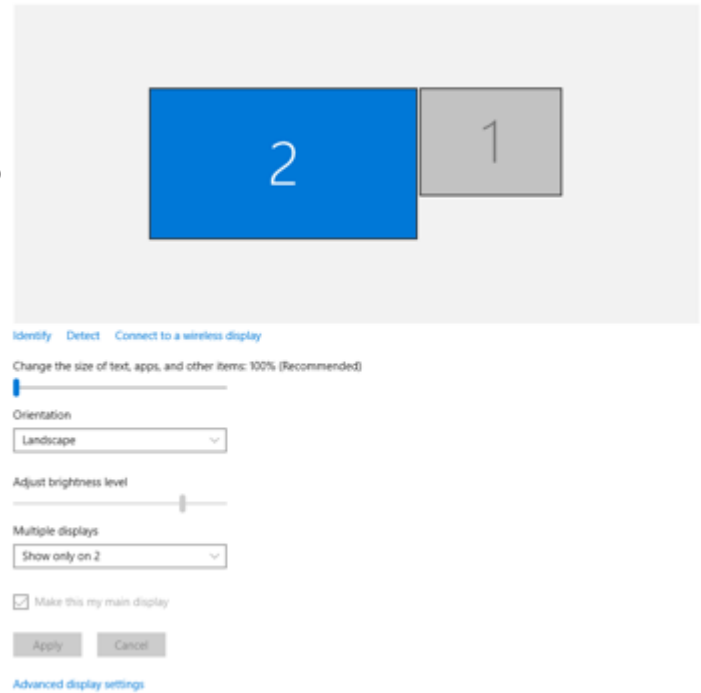
Set Main Display:

Navigate to display preferences and set the RAVEN MTi as the display on the left. Then check the box to make the RAVEN the main display.

Users also need to set the size of the text to %100 so the RAVEN application will open to the correct size.

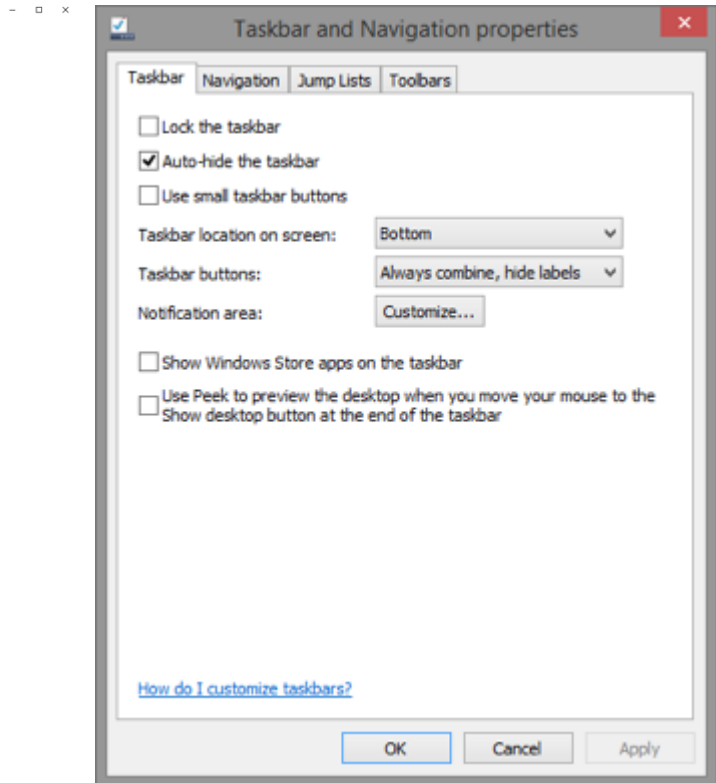
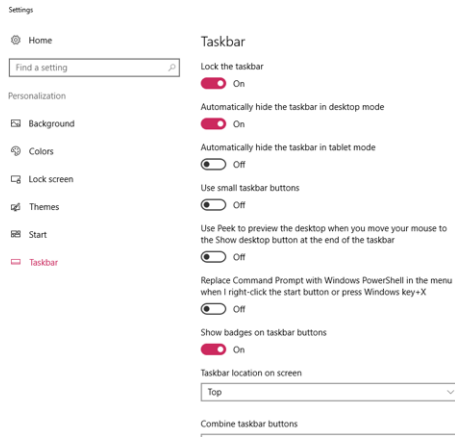
Finally, confirm the RAVEN display is set to 1920X1080

Customize your display



Auto-Hide Taskbar:

Right-click your Taskbar and select "Properties." Make sure all of the options here are unchecked, except for the "Auto-Hide Taskbar" option. Confirm the Taskbar location is set to "Top/Right" and the Taskbar buttons should be set to, "Always Combine, Hide Labels." Now, close the window.



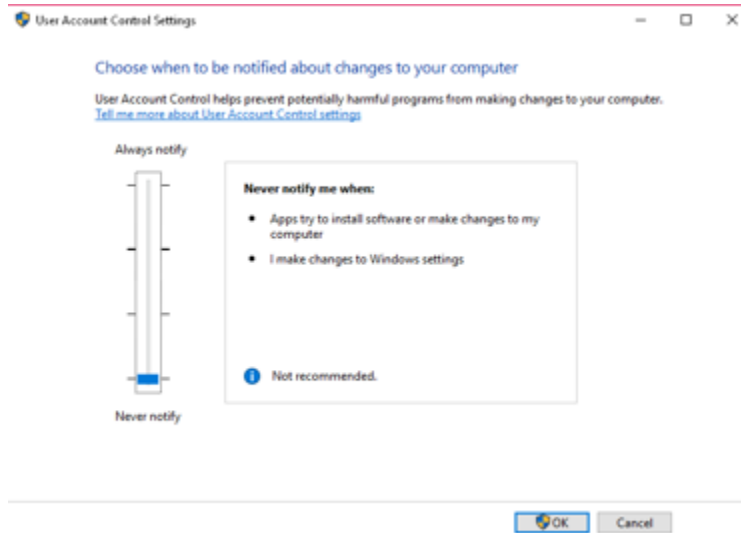
If users don't set the Taskbar to autohide it will throw off the RAVEN Internal Mixer alignment



FIREWALL

User Account Controllers:

Go to the home screen and type in “change user account control settings”. In the window turn the slider all the way down to “never notify”. This will stop Windows from asking permission every time the Raven Application and DAW are opened.



Firewall Settings:

If experiencing communication errors between V control and Raven, go to your home menu and type in “Windows Firewall”. Try turning off the “private network firewall” settings by clicking the “turn Windows firewall on or off” then check the box for “turn off Windows Firewall”.

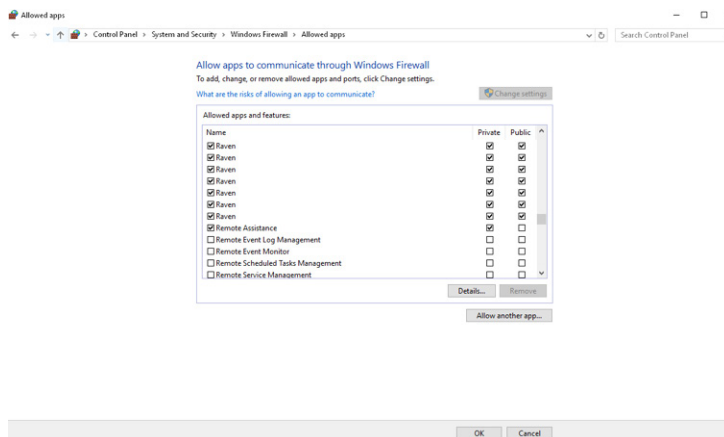
Customize settings for each type of network

You can modify the firewall settings for each type of network that you use.

Private network settings

- Turn on Windows Firewall
 - Block all incoming connections, including those in the list of allowed apps
 - Notify me when Windows Firewall blocks a new app
- Turn off Windows Firewall (not recommended)

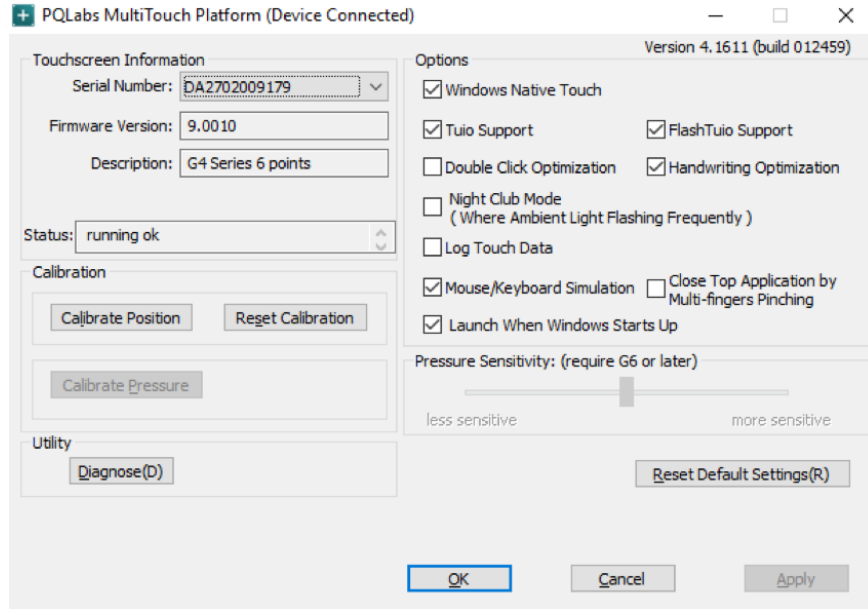
If you don't want to turn off the entire firewall you can give Raven and V Control access to the firewall click on the “Allow an app through Windows Firewall” tab. Check the box for Raven and V Control.



MTI-1 CALIBRATION

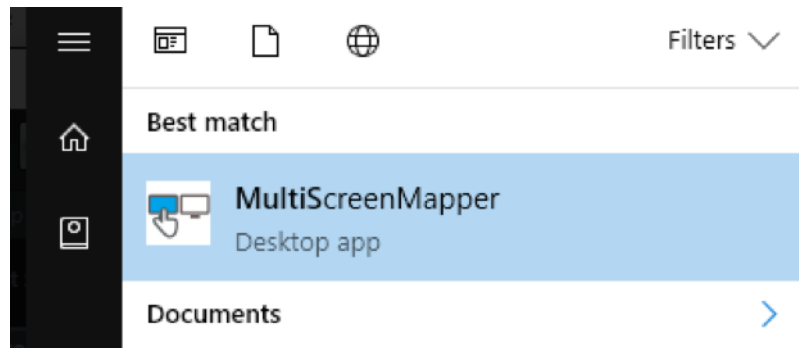
Multi-Touch Platform:

Launch the MultiTouch Platform application. This can be found in Program Files(x86)/Multitouch Folder. Press the Calibration Position button and follow the prompts on the screen and touch the center of each “+” as it appears.

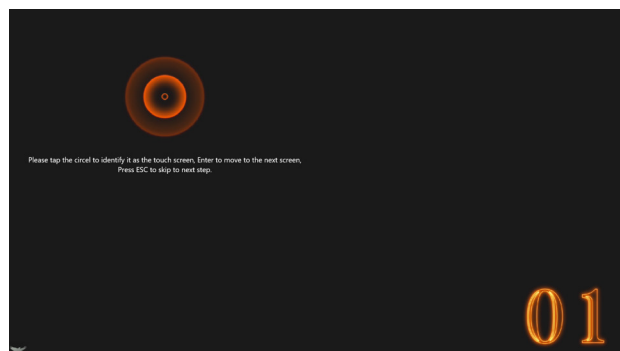


Multi-Screen Mapper:

To configure Multi-Touch for two RAVEN MT1's. Open the "Multi Touch Mapper" application to start the dual Configuration.



Press and hold the left display and then release. Then repeat the press, hold and release for the right display.



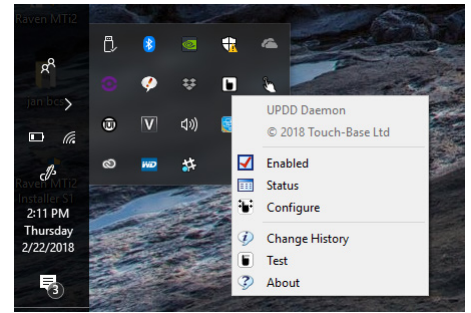


MTi2 CALIBRATION

The RAVEN MTi2 Installer will install the UPDD Touch Driver. This driver installs three different touch applications that are all required for Multi-Touch to function.

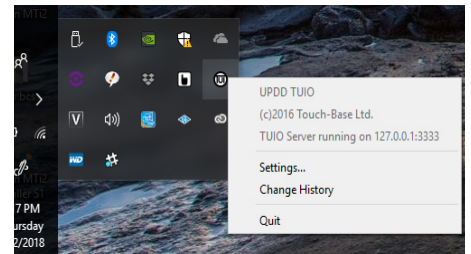
1. UPDD Daemon:

This is the application that allows for Configuration/Calibration as well as checking the status of the display and running tests and diagnostics. To open this application, click the hand icon from the system tray. After installing the RAVEN software users will need to run the configure option and follow the directions on the screen.



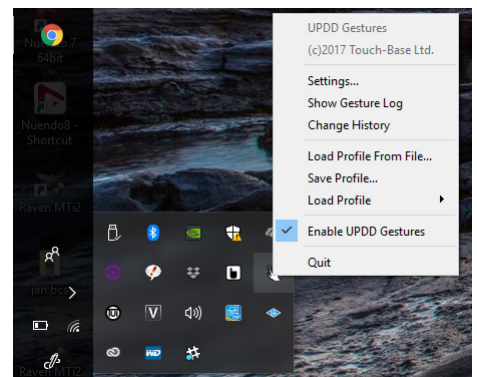
2. UPDD TUIO:

This application is required for all Multi-Touch applications including the RAVEN MTi application. Be sure this application is running at login or **there will be no touch** on the RAVEN MTi application.



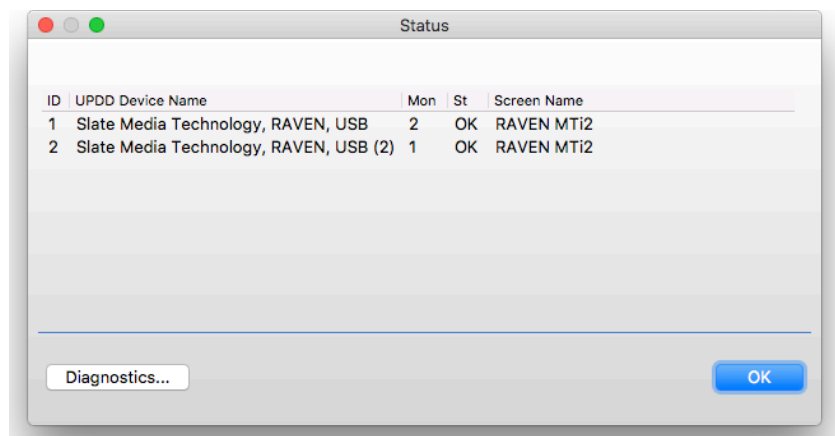
3. UPDD Gestures:

This application is required for all single touch and mouse actions to function. This application also allows users to perform gesture actions such as rotate left/right, pinch zoom, and three finger double tap



UPDD Status:

Click the UPDD "Hand icon" in the system tray and select "Status". The status of the USB connection of the displays will be shown here, all touch displays should say "OK" and be set to Display 1 if using single RAVEN or Display 1 and 2 when using Dual.



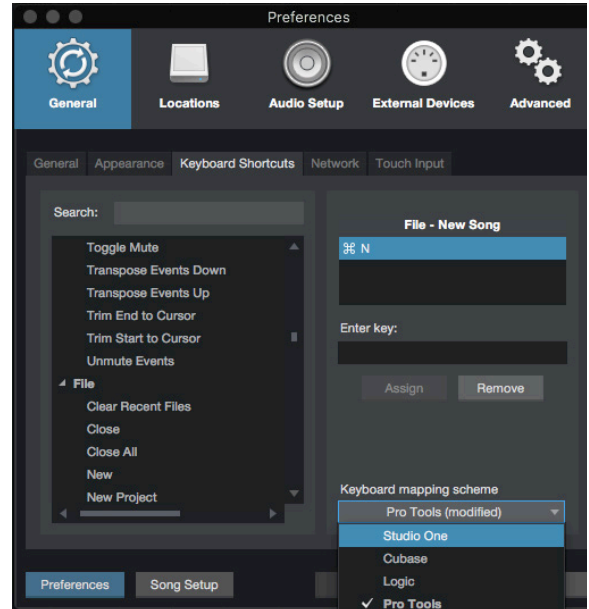
STUDIO ONE KEYScheme



Users will need to import the RAVEN keyscheme to utilize all the custom Batch Commands that have been programmed.

Key-scheme Setup

1. Be sure to download the “RAVEN Keys Studio One.keyscheme” file from the Slate Users Account on the downloads page.
2. Once downloaded, on the “Keyboard Shortcuts” tab, select the “Keyboard Mapping Scheme” menu option and locate the “RAVEN Keys Studio One.keyscheme” file.
3. The RAVEN scheme is programmed with some of the Pro Tools Key Commands, as well as custom key commands for adding inserts/sends/buses etc.



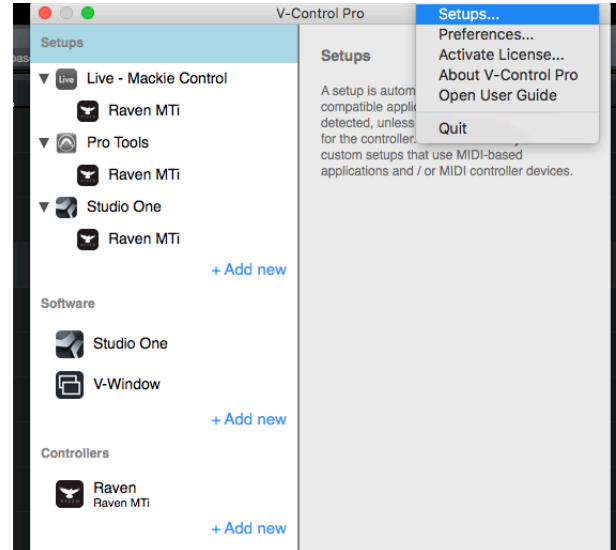
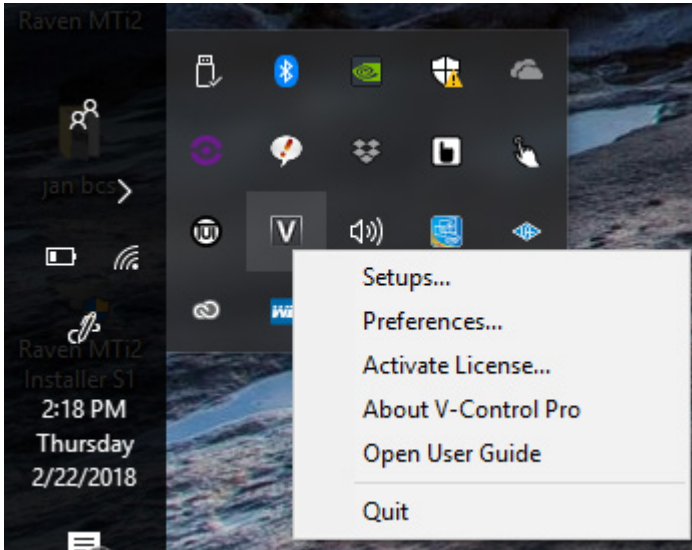
If users prefer to use the Studio One Key Commands, download the RAVEN S1 key-scheme and be sure to use the “Raven Studio One Key Scheme Ravlay” from the Slate Account or in the “Default Layout” option in “Settings”

V-CONTROL PRO



V-Control Pro

The RAVEN installer will also install V-Control Pro which will be needed to send the HUI communication data from the DAW to the RAVEN.



V-control must first be opened and connected to the DAW for RAVEN to work correctly, double check the “V” for V-control is showing in the Top Right Corner of the Menu Bar.

To check V-Control Pro is syncing with the DAW, open the V-Control Pro settings window and notice the current application is showing and not “grayed” out. Once all applications are open, Users should notice the DAW showing in the “Software” tab and the RAVEN MTi showing in the “Controllers” tab. Finally, in the “Setups” tab, the DAW and RAVEN should be lit up.

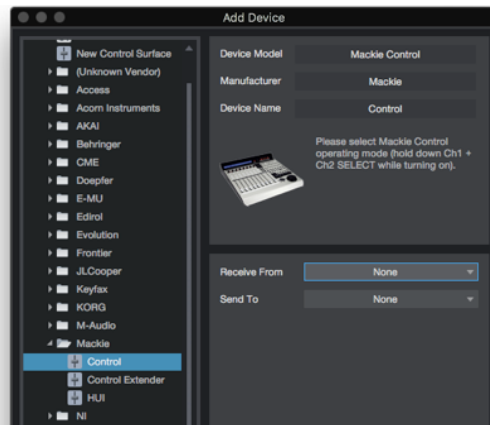
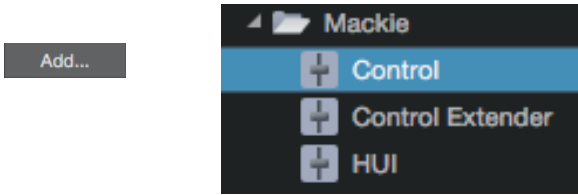
User will notice that V-Control Pro is not shown in the “Force Quit” applications window. If V-Control Pro freezes, open Activity Monitor and stop the process then relaunch V-Control Pro.

V-Control Pro is using the computer http ports to communicate with the DAW, so be sure the firewall or Anti-Virus software is not blocking V-Control Pro from accessing the DAW.

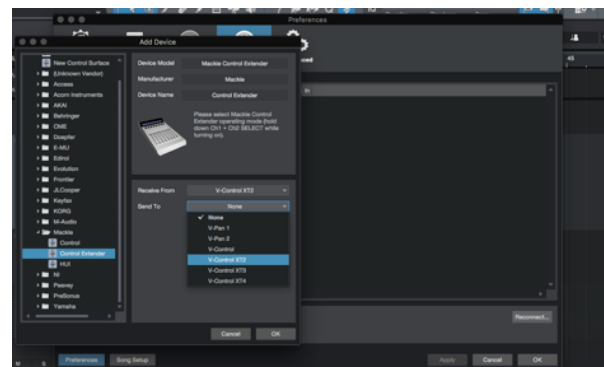
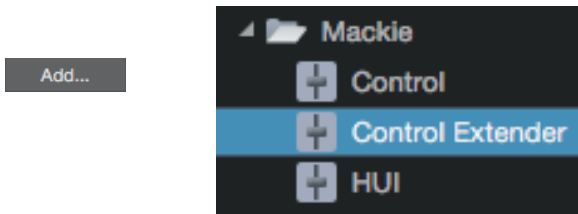
You don't need a license to use Raven with V-control. Be advised that this version of V-Control Pro is unlicensed since V-control Pro doesn't need a license to work with Raven.

V-Control Pro Setup

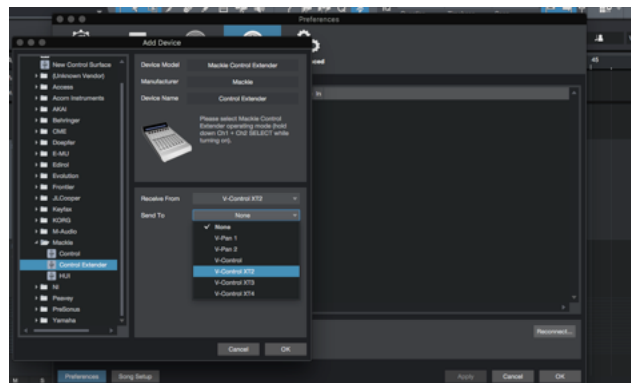
1. Open Studio One Preferences and select "External Devices" Click the "Add" button and select the "Mackie" folder and click the "Control" option and set the input and output to V-Control Pro.



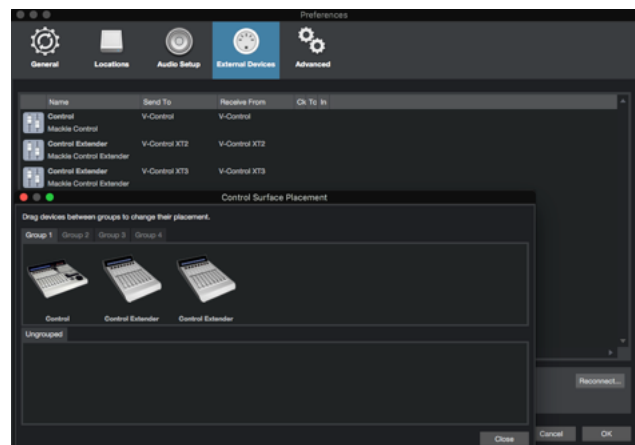
2. Still in Studio One "External Devices" Preferences, select click the "Add" button and select Control Extender and set the input and output to V-Control Pro XT2



3. Still in Studio One "External Devices" Preferences, select click the "Add" button and select Control Extender and set the input and output to V-Control Pro XT3



4. Now, click the placement tab and drag the devices into group 1. The order should be "Control", "Control Extender", "Control Extender"



TOUCHING/CONTROLLING PLUG-INS



Loading Plug-ins:

Simply reach out and tap a desired rack space on the Inserts area of the mixer. Navigate through your menus by using a one finger drag until the desired plug-in is reached and tap the plug-in. Once the plug-in loads, users can easily make detailed adjustments to the plug-in and once finished, close the plug-in by using the Close Plug-in button to quickly hide the plug-in from the screen. Users can also use Multi-Touch with any of the Studio One Plug-ins to control filters and gain at the same time.



Controlling Plug-ins:

Single touch works perfectly with all plug-ins. Using linear vertical or horizontal adjustments, touch the center of the plug-in parameter and simply adjust the plug-in. It is not recommended to touch controls that are small in size. Plug-ins should only be touched when there is a large control that is easy to activate via touch. Otherwise, a mouse should be used to control the plug-in.

Plug-in parameters are controlled by a single touch only, unless it is a Presonus plug-in. Functionality is the exact same as using a mouse and uses the familiar up/down movements to control knobs.

Hide Floating Windows:

This button allows users to quickly Show/Hide any floating windows showing including their sends, automation window and even multiple plug-ins at once.



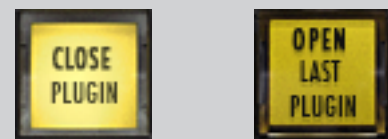
Closing Plug-ins

Plug-ins can be opened and closed using the "Open/Close Last Plug-in" button found in the RAVEN Tool-bar.



Plug-ins can also be closed by touching the X on the top right of the plug-in. Use the INS button in the external mixer to open the channel editor window.

To recall the last plug-in being adjusted, simply touch the "Open Last Plug-in" button and it will recall the plug-in. It is always acceptable to touch a rack space to load the plug-in as well to quickly access desired plug-ins.



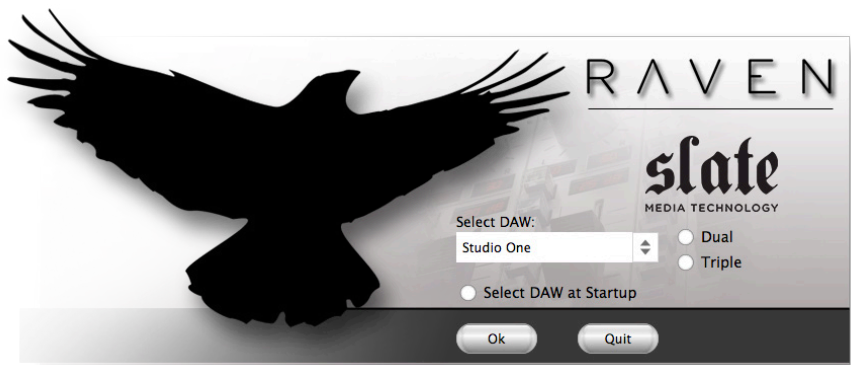
RAVEN MTI SOFTWARE

Open the RAVEN MTi software

The RAVEN MTi application is needed for full Multi-Touch and Batch Command integration with the touch screen and DAW.

Users must have an iLok2 or iLok3 and a valid RAVEN license to run the RAVEN software.

Launch the RAVEN MTi software from the Applications folder and select "Studio One" from the Drop menu. If Studio One will be the only DAW being utilized with the RAVEN then uncheck "Show DAW at startup" to set the RAVEN to default to Studio One and not show the RAVEN splash screen at startup.



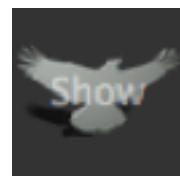
Now that the RAVEN software is open, it will rebroadcast all TUIO touches directly to Studio One on Port 3334. If V-Control Pro, RAVEN, and Studio One have been configured correctly the "Stop" button on the RAVEN should be pushed down, meaning it is now acting as a controller for Studio One.



Hide RAVEN:

To interact with your OS while RAVEN is open, we have provided a quick and easy Hide RAVEN button above the RAVEN Power button on the RAVEN Tool-bar. Touch or Click with your mouse to Hide your RAVEN software almost entirely except for the RAVEN on the bottom left hand side displaying the text, "Show." Touch or click the RAVEN Logo "Show" on the bottom left hand side of the screen and the RAVEN software will again appear.

To Add or Remove Racks press the + to show more racks in your tool-bar or - to show less racks. RAVEN Racks can be customized to show as many or few tools as you would like.



When the RAVEN mixer is showing only 1 rack can be open in order to leave room for the Raven External Mixer.

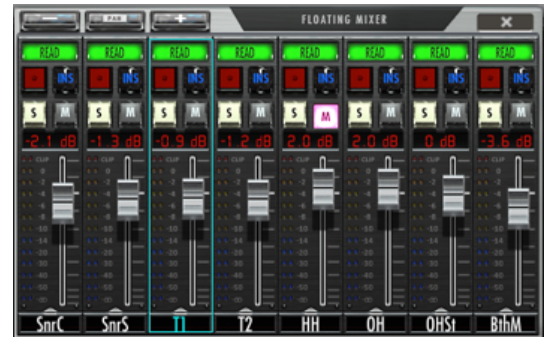
RAVEN MULTI-TOUCH MIXERS



Floating Mixer



The Floating Mixer buttons brings up a bank of faders on a floating window over the Edit window. The floating mixer can be adjusted and moved anywhere on the screen.



The floating mixer can be expanded or collapsed by pressing the “-” or “+” button on the floating mixer header. The mixer can be viewed as 8, 16 or 24 channels.

Like the RAVEN External Mixer, the floating mixer can also be banked using finger swipes. Touch the fader faceplate and glide your one finger left and/or right to bank by one track at a time. Do not touch the fader cap for a banking motion. Users can also bank more quickly by using two-fingers on the faceplate of the fader tracks and swipe left or right to bank by 24-tracks at a time. Pressing the pan button will switch the top section of the mixer from automation modes to pan modes.

External Mixer

Pressing the RAVEN MIXER or will open the External free-standing Mixer.



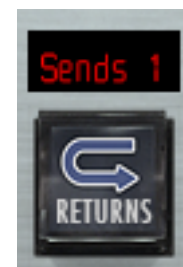
Here users can open inserts, adjust pans, solos/mute, and automation status.

Sends Mixer

The Channel/Sends button is only accessible in the External Mixer mode, and if active users can touch the Channel button to flip the screens to see their SENDS and corresponding faders.



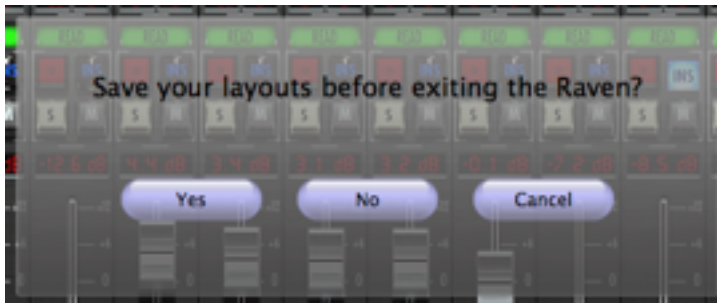
Use the “Cycle” button to switch between Send E or “Every” send for the selected track and Sends 1-10 depending on how many FX or Bus sends are in your project.



RAVEN MTI SOFTWARE CONT:

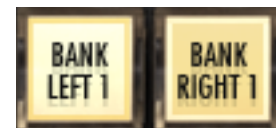
Power:

When the Power button is pressed and held for 3 seconds, users will be prompted to save a raven session. If you wish to save your RAVEN session, press yes. If not, press no. Pressing cancel will keep the current RAVEN session running.

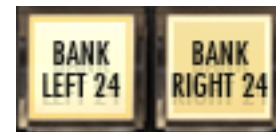


Banking:

Moving between tracks is quick and easy. Using your finger on the lower half of the fader plate, simply glide one finger across the screen in the direction you would like to move. The tracks will move one track at a time in this scenario.



If you would prefer to move by 24-tracks, simply use two fingers to swipe left or right on the lower half of the fader plates.



Users may choose to bank tracks by 1 or 24 tracks. To switch between the two modes, simply press and hold the banking buttons and they will switch between 24 and 1.

Users may feel they've reached the end of their project but are missing tracks. This is not the case, RAVEN will only recognize full sets of 24 Tracks. If there are remaining tracks after the user has reached the last set of 24 tracks, the user should then switch to single track banking to reach the last tracks on the Raven Mixer.

Modifiers:

Modifiers keys latch when touched once, and unlatch 1 second after the a touch occurs. To use Modifiers with Touch, push down SHIFT+CMND and touch the desired location where the click with modifiers should occur.



Open/Close Last Plug-in:

Use this button to close plug-in windows or to show the last open plug-in once the plug in window is closed.

Hide Floating Windows:

This button allows users to quickly Show/Hide any floating windows showing including their sends, automation window and even multiple plug-ins at once.



RAVEN MTI SOFTWARE CONT:

Pan Left/pan Right:

This button shows the Right side of any stereo track. To see stereo tracks, touch the button so that it reads "PAN RIGHT" the only track visible will be the right side of any stereo track in your session. Touch the button again to see left panners and



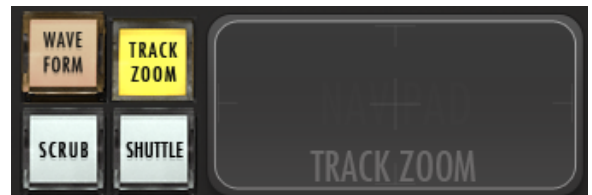
Navpads and Zooming:

There are two Navpads on the RAVEN Mixer. One floating window, and one built into the tool-bar. Both have the same functionality. Within RAVEN Settings we have included the NAVPAD Response Button. When touched, users are able to adjust the NAVPAD sensitivity of their touch from levels 1 through 20. 1, being the slowest response and 20 being the fastest. Within RAVEN Settings we have included the NAVPAD Response Button. When touched, users are able to adjust the NAVPAD sensitivity of their touch from levels 1 through 20. 1, being the slowest response and 20 being the fastest.



Tool-bar Navpad:

Navpad located directly on the RAVEN Tool-bar.



Floating Navpad:

Launches a floating navigation window where you can Zoom, Scroll, Shuttle and Scrub.



The NAVPAD uses an X, Y-axis to control zooming. Use only a single touch to control zooming. The NAVPAD is not designed for two finger pinch gestures for zooming. A two-finger touch moved along the x or y-axis will scroll the edit window.

Waveform Zoom:

Touch the "Waveform" button on the Navpad to adjust the size of the waveform drawn



Scrub Zoom:

Touch the "Scrub" button to scrub back and forth through the session



Shuttle Zoom:

Touch the "Shuttle" button to fast forward and rewind in the session



RAVEN MTI SOFTWARE CONT:

Track Icons:

The RAVEN has built in icons to help you identify your tracks in a busy mix. To load an icon

Press and hold the Icon slot below the fader module. A floating icon window will appear



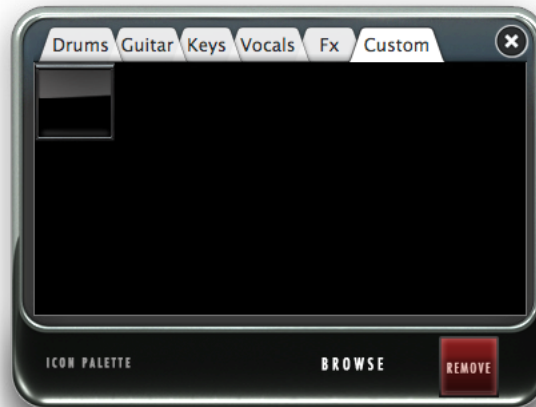
Tap an icon and a yellow box will appear around selected image



Touch each channel icon slot that you wish to load with an image. You can also swipe across the icon slot to load the images.



To remove an icon, touch the blank icon box in the palette, and then touch the channel icon slot you wish to remove.



To add import custom Icons go to the "CUSTOM" tab on the icon palette and hit the "Browse" button. Now import custom images and they will show in this tab.

The icons are saved with the Raven Layout (RAVLAY) based off the track names in the session where the icons are located.

Be sure to save the layout and RAVLAY so the icons will show up on every session and icons don't have to be added every time.

i.e any track named "KICK" will open up the icon associated with that name. So keep the naming short as HUI can only save 4 Character track names. KICK, SNR, VOX1, LV, BGVOX.

RAVEN MTI SOFTWARE CONT:



Pan Mode:

This changes the control of the pan knobs from rotary to traditional up/down. In rotary mode, move your finger in a circular motion around the perimeter of the knob. In up/down mode, touch the middle of the knob and move up or down

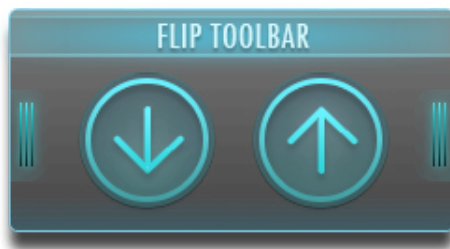


Automation:

Pressing the button above the INS button, the automation drop-down menu will appear. to adjust pan. Select the desired mode, and the mode indicator will change.

Flip Tool-bar:

Using the "Flip Tool-bar" button, users can now gain access to their lowest three RAVEN Tool-bars without having to display them vertically. Hit the "Flip Tool-bar" button to open a floating window with "Up" and "Down" arrow buttons. Use these two arrows to shift between the bottom three RAVEN Tool-bars on each layout.



Memory Locations:

These buttons function exactly the same as the memory locations feature in Pro Tools. Note: The smaller 6-panel are linked to the larger 16 locations.



Clip Clear:

This button clears your clips, if needed adjust pan.



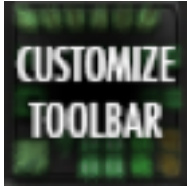
Fine Faders:

Tap this button to put faders into "FINE" mode, where finger movements are slowed to tenths of a DB. Use the "FINE FADERS" button to put all faders into fine mode. Tap the DB display window to put single channels into fine mode.



We have also included the ability to control the response of the Fine Faders by pushing and holding the Fine Faders button on the RAVEN Tool-bar. Adjust between 1 and 20, 1 being the slowest response for extreme detail and 20 being the fastest Fine Fader response time.

RAVEN MTI SOFTWARE CONT:



Customize Tool-bar:

Tap this button to enter "Customize Tool-bar" mode. Simply Press the button and it will latch. Drag icons and buttons around the tool-bar to your liking. Press the button again and it will unlatch allowing you to use your custom tool layout.

DUAL RAVENS:
Use the "Floating Palette" to move buttons between both screens.

ARROWS CURSORS:

Easily control your keyboard cursors like a console with the arrow cursors.layout.

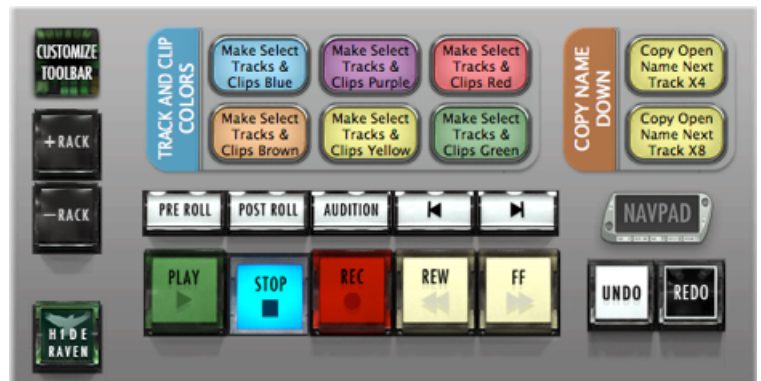


Floating and Essential Palettes:

Pressing one of these buttons will bring up their own customizable floating window. You can populate these windows with tools that are essential to your work flow, and can move them anywhere on the screen.



To customize your Essentials Palette or Floating Tool-bar: Press the Customize Tool-bar button on the top left corner of the palette. Drag tools to the desired palette. The palette will automatically resize to fit more or less tools in your configuration. Press Customize Tool-bar button again to exit. If users prefer to not show any RAVEN racks, remove racks all racks with just the Floating Tool-bar & Essentials Palette will appear. To bring back the RAVEN Tool-bar, simply press the + Rack button.



RAVEN MTI SOFTWARE CONT:



RAVEN Settings:

Touch the "Settings" button on the bottom right of the RAVEN rack and the "Settings" rack will appear at the very top of the RAVEN tool-bar.



Save As:

Brings up the dialog window for renaming and saving the RAVEN session

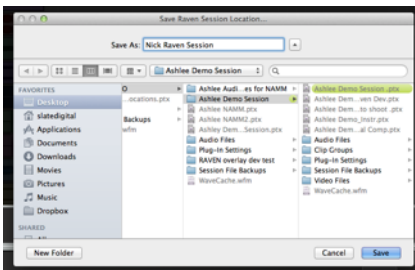


Save Raven Session:

The RAVEN software allows users to save current layouts, icons, and other customizations to a dedicated session folder. You can save this folder with your DAW sessions and instantly recall them at any point in time. Hit the Save RAVEN Session button to save the current Raven configuration,.



Choose a folder you want to save the session to and give the folder a name and press Save.



Save Layout:

Saves your RAVEN tool-bar layout, your Floating Tool-bar layout and your configured Batch Commands to a specific button you can get back to easily. Press Save layout and choose a number 1-4, 1-6 or 1-8 to save. To recall your saved layout, press the assigned button.



Load Raven Session:

Press "Settings" button and select the "Load RAVEN Session" button. Loads a previously saved RAVEN session. (.ravlay file) to a location



Choose a folder you want to save the session to and give the folder a name and press Save.

Set User Default:

RAVEN automatically launches in RAVEN Factory Default layout. Once users have customize and saved the layouts. The user can set the current layout to launch at default by touching the "Set User Default" button.



Once highlighted to "User Default," the user knows that they are using their layout as default.

RAVEN MTI SOFTWARE CONT:

Video:

Direct link to our RAVEN Videos on our SlateDigitalTV Channel.



Switch RAVEN:

Easily switch between different RAVEN DAW support software.



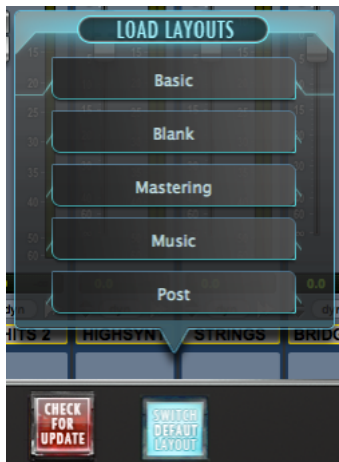
Check for Updates:

Easily check to confirm your RAVEN software is up-to-date.



Switch Default Layouts:

Easily change between preset default layouts we have included for various



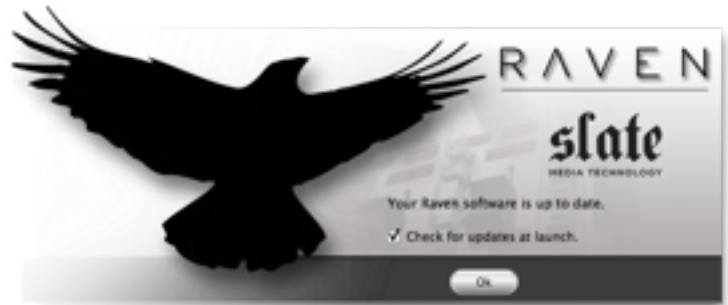
User Manuals:

Open your user manual directly from your software and use two fingers to scroll through your manual to find the answer you're looking for.



Slate RAVEN Forum:

This button will automatically open the default browser and navigate to the Slate Media Technology Forum. You can trade Batch Commands here as well as ask questions to other RAVEN Users.



Save Studio One Session:

On the RAVEN Tool-bar, we have included a Save Pro Tools button that allow s you to quick and easily save your Pro Tools progress. Remember, your Pro Tools session is a different file than your RAVEN Session so be sure to save both frequently when changes have been made.

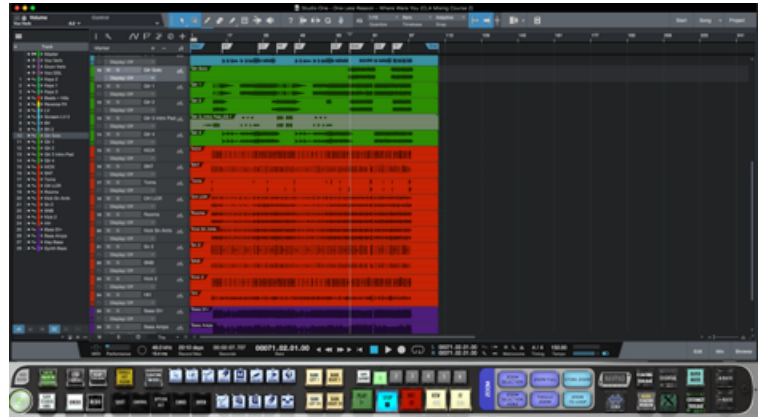


EDITING WITH STUDIO ONE



Edit Window:

RAVEN allows for single touch control over the Studio One Edit window. Familiar tools and functions can be easily accessed with your fingertips, offering an improved work flow. Use one finger swipe up or down to navigate around studio one. Use a two finger pinch and splay to zoom in and out of tracks. To edit events press and hold for 2 seconds on a region and this will allow the selection/fade/split of that audio event. All of the edit tools can be accessed from the tool-bar as discussed in the previous section. Experiment with button layouts to find your optimal work flow positioning Choose a folder you want to save the session to and give the folder a name and press Save.



Zoom In/Out:

Zooms in or out of a section in the Edit window. On Studio One users can also "pinch" zoom in and out of the edit window vertically



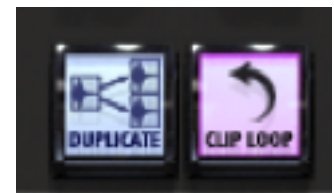
Nudge +/-:

Use the Nudge buttons to nudge a selected audio event forward or backwards.



Tool Palette:

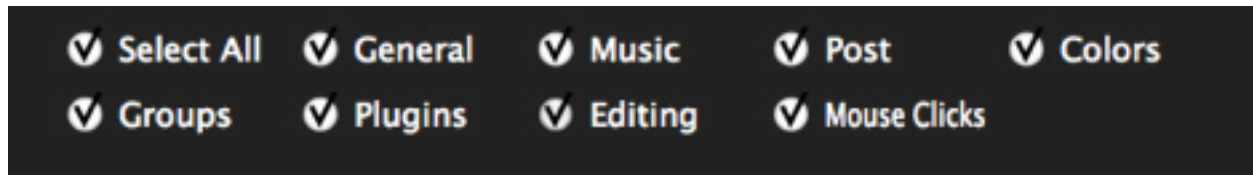
These buttons activate the tools commonly used in Pro Tools. Since they are located on the tool-bar, there is no need to reach to the top of the Pro Tools screen to select tools. Tools with multiple functions can be toggled by pressing the tool button until the right function is selected.



BATCH COMMAND SYSTEM CONT

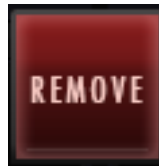
Search and Filter

On the top of the Quick List, users can search quickly through the Factory & User Batch Commands. For further search refinement, users can quickly filter your search results between various workflow types such as, "General," "Music," "Post," and more within the "Factory" tab.



Remove

Select an undesired Key Command or Quick List item by touching and highlighting it and then hit Remove to eliminate the selected item from the command sequence.



Clear All

Clear All will completely eliminate all programmed information in the Batch Command menu associated with the selected button. This includes Name & Color.



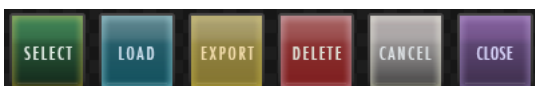
Save

Use the Save button to save a custom Batch Command. Be sure to give it a name you will recognize in



Load and Export

Easily share customized Batch Commands on our RAVEN Forum by visiting our website: www.slatemt.com and visiting the Forum. Create a Batch Command and Save it to your user tab. Then just selected it in your User tab and hit Export. It will export to the location you choose. Additionally, you can Import Batch Commands you find on the forum or even Batch Commands other engineers in your studio have created. the Quick List.



Quick List

Press the Quick List button in the Batch Command System to enter a Preprogrammed menu selection or mouse click to the command sequence. We have defined the Quick List items by their title, however for details on the specific key commands, menu selections and/or mouse clicks each specific Batch Command is performing, please review our Batch Command programming information below.



Using the Quick List

Once the Quick List button has been pressed a menu will appear with multiple tabs of preset Batch Commands labeled, "General," "Music," and "Post." Additionally, there is a "User" tab that will allow you to create and save your own Batch Commands within your RAVEN software.

Use two fingers on the menu to scroll through the lists on the various tabs and use the LOAD button to place a Quick List item into the command line

BATCH COMMAND SYSTEM



Batch Commander

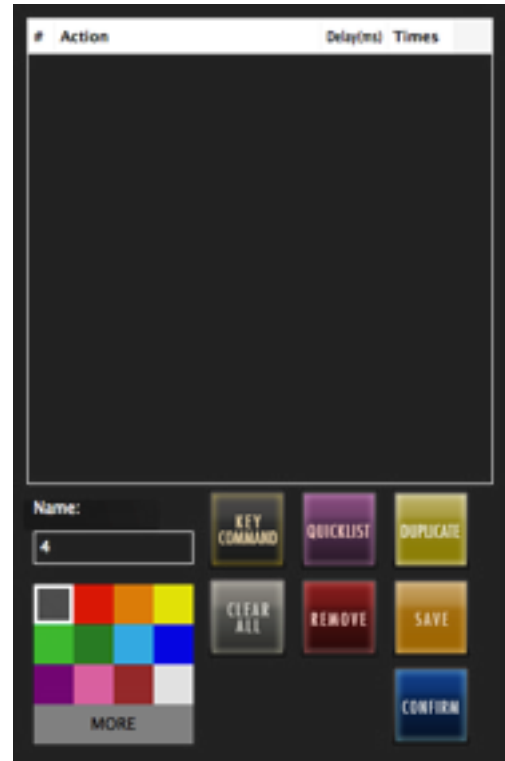
The Batch Command System is a series of single buttons that can execute up to one thousand key commands, menu selections and mouse clicks. The software is complete with over one hundred preset Batch Commands, however it is very easy for users to create their own and even share with other RAVEN users. The Batch Command System window contains multiple functions as explained below.

Editing a Batch Command

Push and hold one of the Batch Command buttons on the RAVEN Tool-bar for 2 seconds. The Batch Command Menu will launch and you can use the various buttons to program custom macros and work flow enhancements.

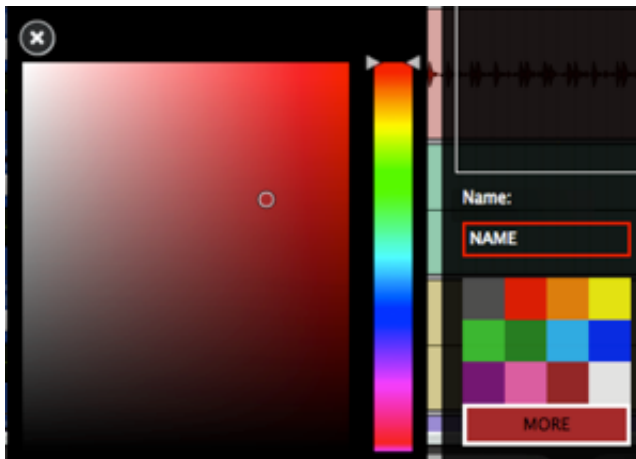
Key Command

Press the Key Command button in the Batch Command System to enter a Key Command into the command sequence. When using a Modifier key only 1 character per line. If there are no modifier being used, users can type full names in one key command line. i.e vocal, or chorus.



Name and Color

On the bottom left of the Batch Command Menu there is an empty bar for naming your Batch Command and a block of multiple colors to choose a color for the Batch Command on the



#	Action	Delay(ms)	Times
1	enter key combination...	0	1

Delay and Repeat Times

Press the Delay space next to a command on the command line and add in an amount of delay in milliseconds. If a Batch Command is not performing correctly, more delay time may need to be added he sequence.

Press the Repeat space to enter a number of times to repeat the command.

Additionally, similar results can be achieved by duplicating the command, however certain commands take better to repetition and others require a duplicate with independent delays on each command line.

BATCH COMMAND SYSTEM CONT

Batch Command Panels (RAVPANS)

Push and hold on the label on the side of each Batch Command Panel to open the Naming and color coding interface of the entire Batch Command Panel.

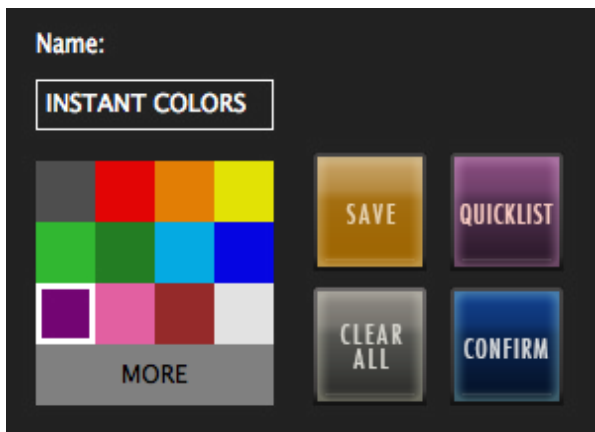


Save Batch Command Panels (RAVPANS)

Push and hold on the Batch Command Panel label and hit "SAVE" to add a customized Batch Command Panel to your Batch Command Panel User Quick List to use to locate across multiple different layouts.

Clear Entire Batch Command Panels (RAVPANS)

Push and hold on the Batch Command Panel label and hit "Clear All" to completely delete the contents of a Batch Command Panel quickly. Be careful when using this function as it will delete the entire contents of a Batch Command Panel including Names, Programmings and Colors locate across multiple different layouts.

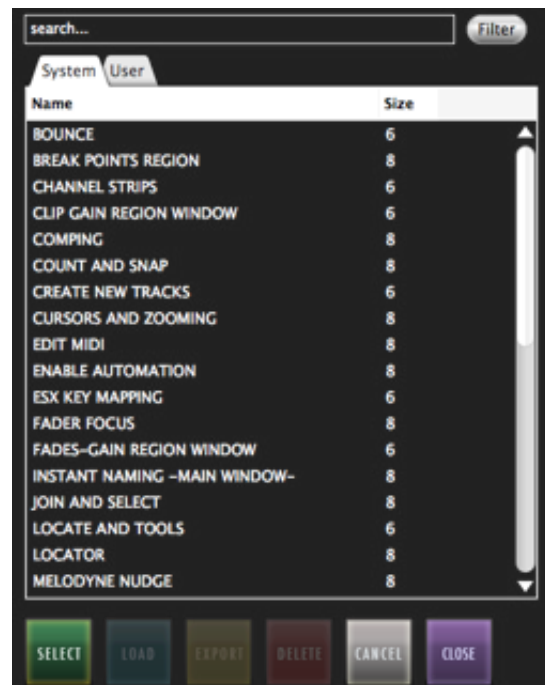


Batch Command Panel (RAVPAN) Quick List.

Save and recall entire Batch Command panels from the Batch Command Panel Quick List. After pushing and holding the label of one of the Batch Command panels, the Batch Command Panel Naming menu will open as mentioned earlier. Hitting the Quick List will open a menu of preset and user saved Batch Command panels which are labeled by panel size.

To load a saved Batch Command panel into an empty Batch Command panel, simply locate a saved Batch Command panel that shares the correct amount of Batch Commands on the panel as listed in the size column of the Quick List.

If the panel and size are not the same, the panel will reject the conversion.



BATCH COMMAND SYSTEM CONT



Customizing a Quick list Batch Command.

We have pre-programmed over one hundred preset Batch Commands for you, however there is a lot of potential for customization. As an example, we have included a "Pitch Shift +12 Cents" Batch Command, however user want it to "Pitch Shift +5 Cents." First, push and hold an empty Batch Command to open the programming menu. Then open the Quick List tab and search for "Custom Pitch Shift"

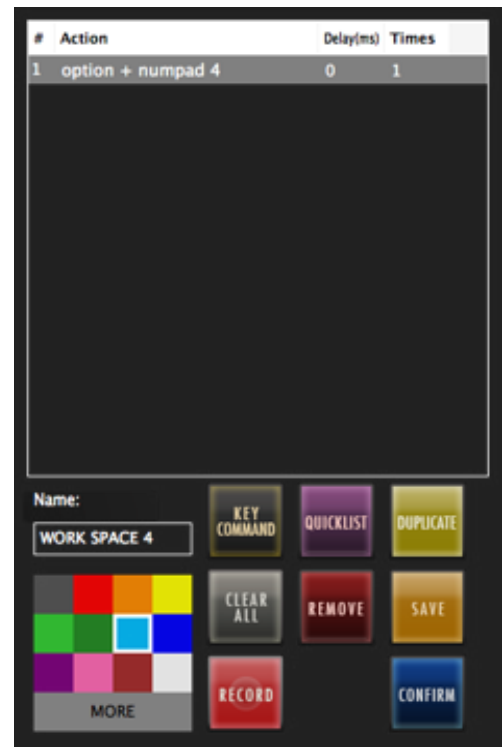
Hit the select button on the Quick List window and watch the selection move into your command sequence on the Batch Command System menu. Next, in the "DELAY" box next to the Action Item enter about "50" ms into the space. Now, hit the Key Command button on the Batch Command System menu and enter the number "5." Lastly, we'll hit the Quick List button again and from the "General" tab, select "RENDER PLUG-IN SETTINGS (Audio-suite)." Give the button and name and color and hit CONFIRM on the Batch Command System menu. You can now see the Audio-suite Pitch Shifting to the "+5 Cents." Note: As a user, you are privileged to our on-going support. If you need help with the Batch Command System or do not know how to program one yourself, contact us on the RAVEN FORUM on www.slatemt.com and we may be able to create one for you and other RAVEN users.

Program your own Batch Command

To program your own Batch Command, enter a sequence of key commands and/or mouse click and menu selection Quick List items to create a custom Batch Command. When finished, use the SAVE button and locate your saved Batch Command within the USER tab of the Quick List menu.

Record your own Batch Command

Users can also use the "Record" feature to record and save custom Mouse-Clicks and use those with key commands and quick list Batch Commands. To record a click, push and hold on an empty Batch Command and hit the "Record" button. Perform the sequence you wish to set to the button and once completed, hit the "record" button again. A window will appear to be able to Name the new recording and once saved will show up in the "User" tab of the Batch Command System menu. Open the Quick List menu and highlight the new recording and hit "select" to add it into the Batch Command programming menu.



The Batch Command System Recording feature records based on the X/Y-Axis screen location. Be sure when performing the recorded Batch Command that the window locations are the same as when recorded as the Batch Commands require the correct X/Y-Axis locations